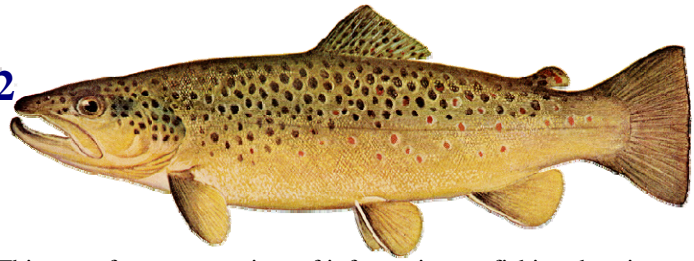


FISHING REPORT NUMBER 22

9/20/2012



YOU CAN FIND US DIRECTLY ON FACEBOOK. This page features a variety of information on fishing, hunting, and wildlife watching in Connecticut. The address is www.facebook.com/CTFishandWildlife.

INLAND REPORT

LARGEMOUTH BASS fishing is reported as generally good. Places to try include Bantam Lake, Lake Saltonstall, Wononskopomuc Lake, Candlewood Lake, Mansfield Hollow Reservoir, Winchester Lake, Stillwater Lake, Bunnells Pond, Lake Zoar, Congamond Lakes, Halls Pond, Quaddick Reservoir, Silver Lake (Meriden), Burr Pond, Cedar Lake, Crystal Lake, Bishop Swamp, Griggs Pond, Red Cedar Lake, Mono Pond and Mudge Pond. **Tournament reports** are from Bantam Lake (fair action, no fish over 3 lbs), Wononskopomuc Lake (mixed reports, fair to good), Candlewood Lake (good action, lunkers in the 4-6 lb range), Mashapaug Lake (lots of action, but lots of 8-13 inch fish getting in the way), Pattagansett Lake (on the slow side), Bashan Lake (fair, nothing big), Glasgow Pond (a bit tough) and East twin Lake (good action, with a 6.7 lb lunker).

SMALLMOUTH BASS are reported at Candlewood Lake, Mashapaug Lake, Lake Zoar, Mansfield Hollow Reservoir and the Naugatuck River. **Tournament reports** are from Candlewood Lake (picking up some), Mashapaug Lake (some action) and Bashan Lake (very hard to find).

NORTHERN PIKE fishing is reported to be picking up, with fish showing up in Bantam Lake, Winchester Lake, Hopeville Pond and Pachaug Pond.

CARP are being caught in Lake Zoar, Batterson Park Pond and West Thompson Reservoir.

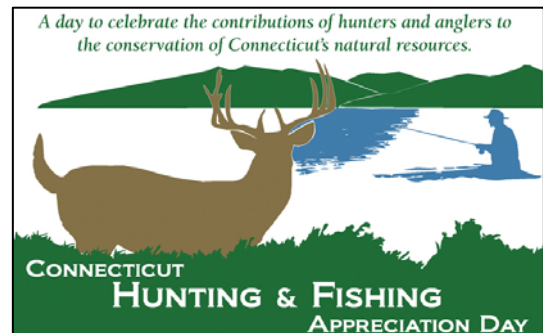
BLACK CRAPPIE action is also picking up, reports include a 3.35 lb crappie coming from Lake Saltonstall and lots of catches at Bantam Lake.

PANFISH are providing some good September action throughout the state. Use worms, grubs, jigs or small poppers for them. Small local ponds are often lots of fun, for bigger waters, try Red Cedar Lake, Griggs Pond, Winchester Lake, Black Pond (Woodstock), West Twin Lake, Tyler Lake, Silver Lake (Meriden), Beseck Lake, Long Pond, Billings Lake, Gardner Lake, Coventry Lake, Wood Creek Pond, Dog Pond, Bishop Pond and Batterson Park Pond.

Connecticut River – Flows are up but dropping again, and on the turbid side. **BLACK CRAPPIE** action is improving in the coves up and down the river. **NORTHERN PIKE** fishing is reported as improving in the coves with fish up to 35 inches being caught. **LARGEMOUTH BASS** are being caught in Wethersfield Cove. Some action also reported from the coves in the Haddam/East Haddam area. Good **CHANNEL CATFISH** fishing is reported with some big fish coming to the net (10 lb plus fish). Success is being found by live lining sunfish suspended 2 feet above the bottom. Anglers should also try cut bait or chunks near brush piles next to deeper holes along the outside of bends. Look for slower moving waters. **CARP** are

SHARE THE EXPERIENCE
Take someone fishing

Join us, September 22, 2012



Sessions Woods WMA
10 am to 4 pm

For more information, visit:
www.ct.gov/deep/HuntFishDay

providing a lot of excitement for those willing to give them a try. Locations to target include Chapman Pond, Hamburg Cove, Keeney Cove, Wethersfield Cove and Wrights Cove.

TROUT

Fall trout stocking update- Fall trout stocking is set to begin. Details will be available in an upcoming news release, next week's Fishing Report and on our Facebook page.

Lakes & Ponds – Lakes reporting good trout fishing include West Hill Pond, Crystal Lake (Ellington) and Beach Pond.

Rivers & streams – Fishing should be improving. Recent rains and cooler nights have improved conditions, with adequate flows (see page 5) and cooler water temperatures in many areas. With fall nearly here, anglers will find streamers to be a major component of the trout fishing toolbox. Patterns to try include White Woolly Buggers, Muddlers, Micky Finn, and Grey or Black Ghosts (#4-10). White, yellow and brown colors are good choices. Nymphing has been productive lately. Good reports last week from the West Branch Farmington River, Farmington River and Housatonic River.

Farmington River – Flows have improved, currently 89 cfs at Riverton, with the Still River adding an additional 124 cfs (look for Still river flows to continue to drop over the weekend). Water temperatures are currently in the low to mid 60's°F.

Hatches/patterns include *Isonychia bicolor* (#12-14, fast water, afternoon/evening), Blue Wing Olives (*Drunella* & *Baetis* spp., #18, 22-24, mid-late afternoon), Caddis (tan #16-18, all day; green #22-26, evening; summer pupa #18-20 morning), Midges (#22-32, morning), Black Ants (#16-18, mid day in fast water), Black Beetles (#16-18, mid day), Flying Ants (#14-20, mid day, when windy/humid) and Stone Hopper (#10-12, mid day).

Housatonic River – Flows are clearing, have improved to levels higher than we've seen since early June, (currently 965 cfs at Falls Village and 1,630 cfs at Gaylordsville) and should drop to very fishable levels through the weekend. Water temperatures have also improved, currently in the low 50's °F (mornings).

Hatches/patterns include Blue Wing Olive (#18-22 on cloudy days, early morning; spinner fall in evening), Leadwing Coachman (#10-12 evening), Black caddis (#14-20, early morning & evening), Light Cahills (#12-14, evening), Stone Hopper (#8-10, mid day) and Sulfurs (#16-18, evenings), Golden stonefly nymphs hatch at first light and adults egg-lay after dark. Trout will ignore everything else when ants are on the water, try Black/Cinnamon Ants (#14-20, mid day in fast water), Black Beetles (#14-18, mid day) and Flying Ants (#14-20, mid day, when windy/humid). Anglers are finding success nymphing the pockets, deeper riffles and pool heads.

ANGLERS - ARE WE REACHING YOU?

Help us learn how to better tell you about fishing in Connecticut and our many programs!

The Inland Fisheries Division would appreciate your time and effort to answer 10 short questions via this on-line survey about some of our current sources of fishing information.

Here's the link to the survey:

www.surveymonkey.com/s/GM9BSQC

If you are unable to take the survey on-line and would still like to participate, feel free to send an email to mike.beauchene@ct.gov or call 860-424-4185 anytime. Thanks in advance for your valued input.

Your help is greatly appreciated!

Find Trout Stocking & Lake Bathymetry Maps On Our Website

- ❖ Maps of all of the state's trout streams and rivers showing the many stocking and access points are now available online at www.ct.gov/deep/troutstockingmaps.
- ❖ Bathymetry maps of many lakes and ponds are now available online at www.ct.gov/dep/lib/dep/fishing/general_information/lakebathymetrymaps.pdf



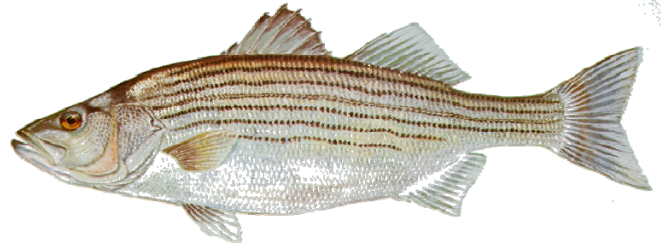
NOTES & NOTICES:

- ❖ **WYASSUP LAKE** (impossible to launch) remains drawn down.
- ❖ **COLEBROOK RIVER LAKE** – Due to low water levels, anglers and boaters should check the USACE Colebrook River Lake website at www.nae.usace.army.mil/recreati/crl/crlhome.htm or call the Colebrook River Lake office (860-379-8234) for updated information concerning status of the boat launch.
- ❖ **LAKE MCDONOUGH**- The MDC boat launch facility has closed for the season.
- ❖ **RAINBOW RESERVOIR** is drawn down approximately 23 feet for dam maintenance, making the state boat launch unusable. Work is expected to be completed on or before September 28.
- ❖ **CANDLEWOOD LAKE** - The lake level is down close to the minimum “summer” level (as required under the FERC license) to facilitate some necessary maintenance of the power facility including replacement of the penstock. At this level (“summer” minimum) the launching of trailered boats (especially larger boats) may become difficult at the Lattins Cove state launch but the Squantz Cove state launch remains fully functional.

TIPS & TRICKS for FALL WALLEYE

1. Fall can generate some of the biggest walleye catches of the year.
2. The slower the better whether you are jigging live bait or trolling up and down the waters.
3. Try using hair jigs as these mirror lifelike actions even when standing still.
4. Crank baits will mimic a 'slow rolling' movement sure to catch the walleye attention as well.
5. Try natural color bait selections on clear line to create as lifelike a situation in the waters as possible.
6. Good choices are baitfish patterns.
7. Bait sizes should be on the large side.
8. The cooler water temperatures of fall result in slower movement by the walleye.
9. Meals are eaten less frequently so a large sized bait selection will appear appetizing to the walleye.
10. Try fishing @ 15-19 feet with lure 70-90 feet behind the boat and troll between 1.5-3 mph.

The Connecticut Department of Energy & Environmental Protection is an Affirmative Action/Equal Opportunity Employer that is committed to requirements of the Americans with Disabilities Act. Any person with a disability who may need information in an alternative format may contact the agency's ADA Coordinator at 860-424-3194, or at deep.hrmed@ct.gov. Any person with limited proficiency in English, who may need information in another language, may contact the agency's Title VI Coordinator at 860-424-3035, or at deep.aaooffice@ct.gov. Any person with a hearing impairment may call the State of Connecticut relay number - 711. Discrimination complaints may be filed with DEEP's Title VI Coordinator. Requests for accommodations must be made at least two weeks prior to any agency hearing, program or event.



MARINE FISHING REPORT

Surface water temperatures in Long Island Sound (LIS) remain in the high 60's to low 70's °F. Check out the web sites listed below for more detailed water temperatures and marine boating conditions and see page 5 for some recent water quality information.

<http://www.mysound.uconn.edu/stationstat.html>

http://marine.rutgers.edu/mrs/sat_data/?nothumbs=1

<http://www.ndbc.noaa.gov/>

<http://www.wunderground.com/MAR/AN/330.html>

Overall, marine fishing has been on the slow side this past week. However, this week's storm should really stir things up!

BLUEFISH fishing remains very consistent as expected during this time of year.

SNAPPERS have virtually vanished from the tidal creeks.

STRIPED BASS fishing is good during early morning or evening times. Live lining bunker or slinging live eels is the ticket for a cow bass. Just remember to use circle hooks to reduce gut hooking. Bluefish and striper fishing spots include the reefs off Watch Hill, Ram Island Reef, Thames River, Plum Gut, Pigeon Rip, Little Gull Island, outer Bartlett Reef, Black Point including Niantic Bay, the "humps" south of Hatchett Reef, lower Connecticut River, Long Sand Shoal, Cornfield Point, Southwest Reef including outer SW Reef, Six Mile Reef, the reefs off Madison, Guilford, and Branford, Falkner Island area, upper New Haven Harbor, Charles Island area, lower Housatonic River, buoys 18 and 20 off Stratford Point, Stratford Shoal/Middle Ground, Penfield Reef, the reefs around the Norwalk Islands, and Cable and Anchor Reef.

SUMMER FLOUNDER (fluke) fishing remains extremely slow.

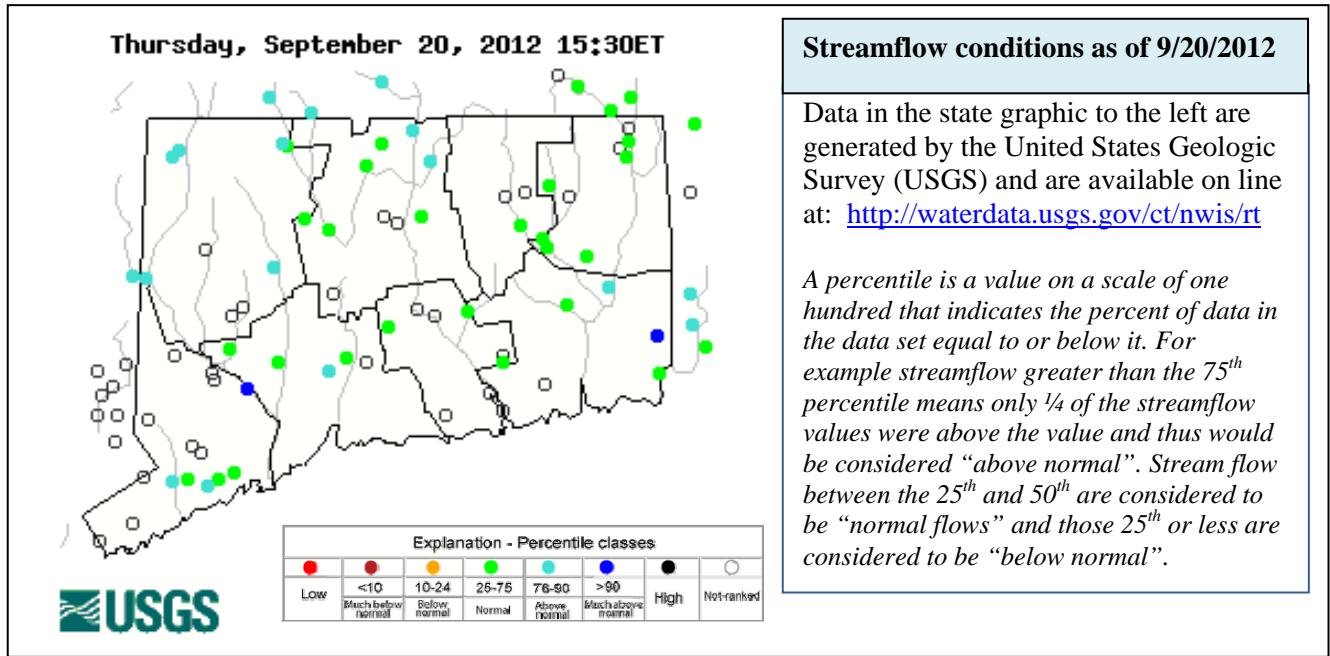
SCUP (porgy) fishing is prime time with hubcap sized fish being reported!

BLACK SEA BASS fishing has slowed down slightly. There is still a ton of sub-legal fish being caught and released which is a good indication for future years as long as the survival rate is high. So when fishing deep water, try slowing down on cranking in that line and also use circle hooks to insure releasing fish in good condition.

LITTLE TUNNY and **ATLANTIC BONITO** are buzzing around eastern LIS from Watch Hill to Wilderness Point, Pine Island area, the Race, the rocky point and beach area at Harkness Memorial State Park, Bartlett Reef, Jordan Cove to Millstone Point, and off Black Point.

BLUE CLAW CRABBING has slowed down but still some huge jimmies can be taken especially now in late summer-early fall.

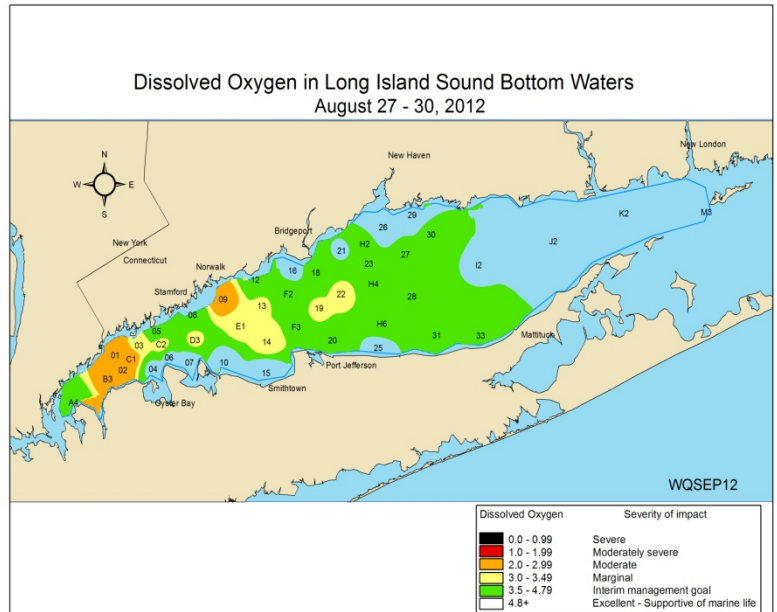
For Current Connecticut Recreational Fishing Regulations: Anglers should consult the 2012 Connecticut Anglers Guide which is now available at most Town Clerks Offices, DEEP offices and at tackle stores selling fishing licenses. Current regulations, electronic versions of the Angler's Guide and additional information can all be accessed on the DEEP website at: www.ct.gov/deep/fishing .



CT DEEP LONG ISLAND SOUND WATER QUALITY MONITORING:

http://www.ct.gov/dep/cwp/view.asp?a=2719&q=325570&depNav_GID=1654

Monitoring of dissolved oxygen levels as well as other water quality parameters are the responsibility of the Long Island Sound Water Quality Monitoring Program within the Bureau of Water Protection and Land Reuse. The amount of oxygen in the water at the bottom of LIS is important for the survival and reproduction of a variety of organism which reside there. Examples include, flounder, fluke, lobster, crab, worms, clams, oysters, and other shellfish. Hypoxia is a condition of low dissolved oxygen concentrations in the waters of Long Island Sound that impacts up to half of the Sound’s waters each summer. The primary cause of hypoxia is nitrogen enrichment that comes from a variety of sources throughout the Long Island Sound watershed, in particular sewage treatment plants, stormwater runoff and atmospheric deposition.



DEEP WEEKLY Fishing Report



Connecticut Department of ENERGY & ENVIRONMENTAL PROTECTION

79 Elm Street, Hartford, CT 06106

www.ct.gov/deep

Striped bass image courtesy Duane Raver/USFWS.